

PRODUCT SPECIFICATIONS

TUBESTAND - QS-508 AND QS-510

- Floor/ceiling design with either 8' or 10' tracks (floor/wall mounting available with QS-4W option)
- Operator control handgrip includes:
 - Multi-function, fingertip controls for all tube stand movement (vertical, horizontal and angulation)
 - ALL-Locks release switch
 - Source-to-image distance indicators - (LED type)
 - Easy-to-read angulation display for tube rotation
- Integral system counterbalancing
- Electromagnetic locks for horizontal and angulation movements
- Tube angulation of +/- 135°, with detents at +/- 90° and 0°
- Fail-safe electromagnetic vertical braking system
- Optional transverse tube arm assembly (QS-10T)

VERTI-Q VERTICAL WALL STAND: QW-420

- Exclusive EZ-Glide hand control for vertical travel
- Low absorption front cover with centering line and cassette indicators
- Patient chin rest
- Integral system counterbalancing
- Vertical travel: 60.5" (154 cm)
- Minimum Floor-to-Focus distance of 13.75" (35 cm)
- Fail-safe electromagnetic vertical braking system
- Accepts cassette sizes of up to 14" x 17" (35 x 43 cm)
- Optional 8" extension bracket (QW-EX8)

VERTI-Q VERTICAL WALL STAND: QW-421

- Specifications are same as above, with exception of:
 - Cassette size varying to 14" x 36" (35 x 91 cm)
 - Vertical travel: 42" (107 cm)

NOTE: VERTI-Q receptors can be ordered either:
Left or Right Hand Load

RADIOGRAPHIC ENCLOSED STYLE TABLE: QT-730

- Enclosed front and sides
- Precision bearing tracks with quick-release locking mechanism
- Length: 74" (188 cm)
- Width: 28" (71 cm)
- Height: 31.75" (81 cm)
- Patient Weight capacity: 650 lbs. (295 kg)

RADIOGRAPHIC OPEN STYLE TABLE: QT-720

- Open front and sides
- Precision bearing tracks with quick-release locking mechanism
- Length: 74" (188 cm)
- Width: 28" (71 cm)
- Height: 31.75" (81 cm)
- Patient Weight capacity: 350 lbs. (160 kg)

MOBILE RADIOGRAPHIC TABLE: QT-710

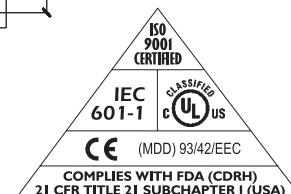
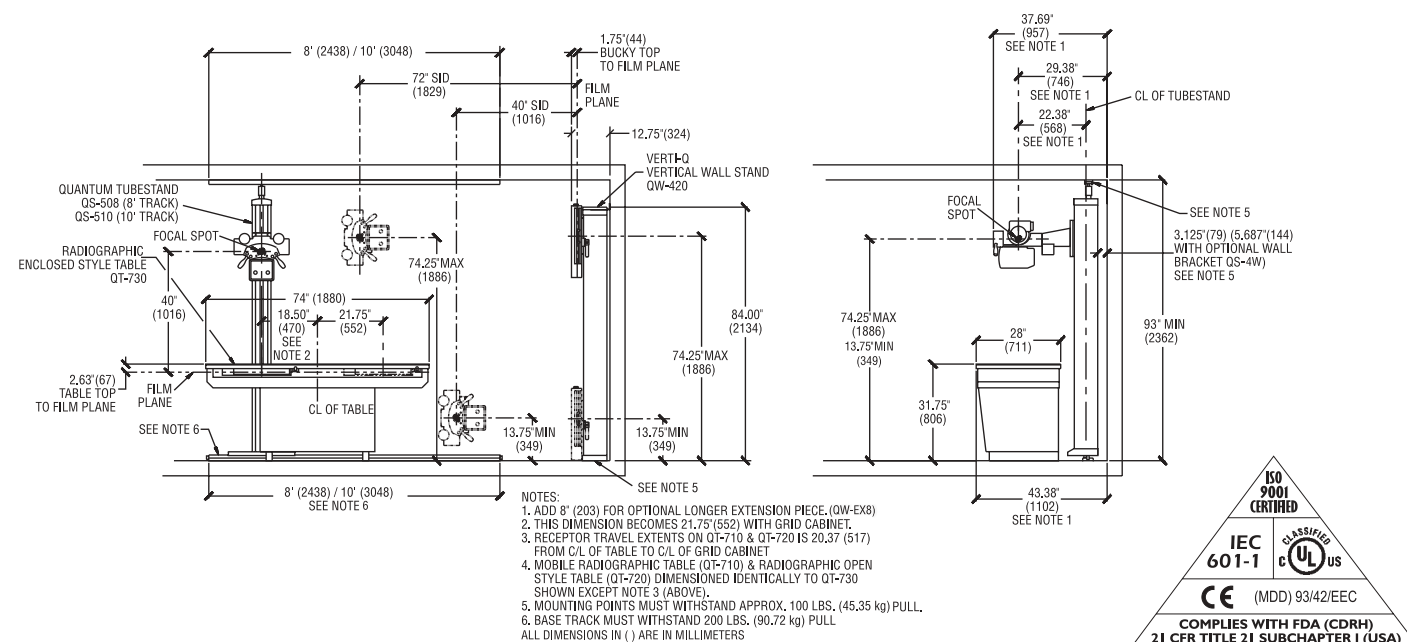
- Large casters with dual foot control locks
- Two sets of operator positioning handles
- Length: 74" (188 cm)
- Width: 28" (71 cm)
- Height: 31.75" (81 cm)
- Patient Weight capacity: 350 lbs. (160 kg)

COLLIMATOR: MANUAL: R40-MC

- Manual adjustment for square or rectangular pattern
- Swivel mount allowing 360° rotation, with 90° and 0° detents
- Laser light for precise cassette centering

SELECTABLE COLLIMATOR: R40-S

- Motorized shutter system with finger tip control and a digital display
- Swivel mount allowing 360° rotation, with 90° and 0° detents
- Laser light for precise cassette centering



Note: specifications subject to change without notice

RAD-X SYSTEMS

High Frequency Radiographic Imaging



Quantum Medical Imaging, LLC

2905 Veterans Memorial Highway • Ronkonkoma, NY 11779 USA • Tel: (631) 567-5800 • Fax: (631) 567-5074

E-mail: info@qmteam.com • www.quantummedical.net

HIGH FREQUENCY RADIOGRAPHIC IMAGING

CORPORATE OVERVIEW

Quantum Medical Imaging is a worldwide leader in the design and manufacture of medical radiographic equipment for hospitals and imaging centers. The company's mission is to provide radiologists and technologists with the most advanced imaging systems, for the performance of high quality diagnostic x-rays.

All Quantum systems have been developed to utilize the newest technologies and materials. From the product design stage through manufacturing, Quantum systems integrate high quality materials for robust construction and advanced electronic solutions for optimal performance. Intelligent product design, rigorous manufacturing standards and a commitment to evolving technologies assure long-term system value, customer satisfaction and a safe operating environment.

The Quantum RAD- χ line of High Frequency Radiographic Imaging Systems offers great flexibility and provides exceptional imaging capability at cost-effective pricing.

ULTRA HIGH FREQUENCY TECHNOLOGY

Quantum's state-of-the-art line of ULTRA HIGH FREQUENCY generators deliver near constant potential power, for optimal imaging. Utilizing the most advanced electronic and software technologies, these x-ray generators provide significant advantages:

- Reduced Patient Dose
- Shorter Exposure Times
- Exceptional Image Quality
- Greater Efficiency / Extended Tube Life

All Quantum generators are standard with Anatomical Programming Radiology (APR), specifically designed for routine and specialty views. An easy menu driven process produces superb images with minimal operator intervention, allowing the attention and focus to remain on patient safety and comfort.

DIGITAL IMAGING READY

Quantum's RAD- χ Systems are designed to be upgradable to our D-QiX Digital Platform.



Quantum's Gold Star Network

An exclusive worldwide dealer network provides factory-authorized sales and service for all Quantum Medical Imaging systems. These authorized Dealer representatives are members of Quantum's Gold Star Network, an affiliation of select professionals around the world who have been recognized for excellence in technical support and customer service.

RAD- χ radiographic systems from Quantum Medical Imaging redefine the science of imaging technology for today's demanding environment.

QS-510 Tubestand with Enclosed Style Table (QT-730) and VERTI-Q Vertical Wall Stand (QW-420)

QS-500 SERIES TUBESTAND

Quantum's QS-500 Series Tubestand is ideal for use in imaging centers, private offices and hospitals. Responsive and smooth, the tubestand is easily positioned using the stylized operator handgrip with dual soft-grip handles. Fingertip controls, conveniently located on both sides of the handgrip, permit easy access to multi-function lock release switches, for adjustment of longitudinal, vertical and tube angulation. A convenient "ALL LOCKS" switch allows quick and easy repositioning of the tubestand, through its simultaneous release of all locks. The handgrip also includes an easy-to-read angulation display for accurate indication of tube rotation and LED indicators to verify the SID.

This advanced tube support column incorporates protective features such as integral counterbalancing and a FAIL-SAFE* electromagnetic vertical braking system. These attributes ensure accurate positioning, enhance ease of use and reinforce safe operation. Extensive vertical travel facilitates proper positioning for skull through weight bearing examinations. The tube head assembly provides various angulations with detent positions for complete coverage for all radiology exams.

VERTI-Q VERTICAL WALL STAND

Contemporary yet highly functional, the Quantum VERTI-Q Vertical Wall Stand was designed with the technologist in mind. A single-columned structure, the VERTI-Q is durable, easy to use and incorporates careful attention to detail and design. Operator safety and control is reinforced through integral counterbalancing and a FAIL-SAFE electromagnetic vertical braking system. Extensive vertical travel enables great flexibility for skull through weight-bearing examinations. The VERTI-Q features Quantum's exclusive EZ-Glide hand control for simple, effortless adjustment of the image receptor.

Available for use with either 14" x 17" or 14" x 36" maximum cassette sizes, the VERTI-Q can be matched with multi-speed reciprocating buckies or fixed grid cabinets. An optional 8-inch extension bracket simplifies seated examinations.

FAIL-SAFE* electromagnetic braking system: utilizes advanced solenoid locks, which remain engaged at all times - unless released by the operator, ensuring a safe working environment.

QS-510 Handgrip with Optional "Selectable" Collimator (R40-S)



Weightbearing Studies with central x-ray beam only 13.75" above floor

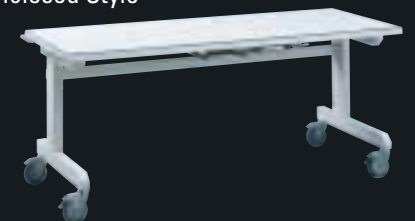
RADIOGRAPHIC ENCLOSED STYLE TABLE (QT-730)

Versatile in its design and application, Quantum's Enclosed Style Table provides a spacious platform for the performance of a wide variety of radiographic examinations. The low absorption, flat table surface design simplifies easy patient transfer, and has a capacity of up to 650 lbs. Precision bearing tracks enable effortless adjustment of the image receptor throughout the entire length of the table. A quick-release locking lever secures image receptor positioning. Constructed of welded steel with a powder-coated finish, the table is impact-resistant for long-term use and value.



RADIOGRAPHIC OPEN STYLE TABLE (QT-720)

Quantum's Open Style Table provides a cost-effective solution and includes all of the features of the Enclosed Style Table, while providing a maximum patient capacity of up to 350 pounds.



MOBILE RADIOGRAPHIC TABLE (QT-710)

The Quantum mobile radiographic table is ideal for the performance of supine radiographs. Large caster wheels provide smooth table movement and maintain table stability when locked.

EZ-GLIDE HAND CONTROL

*PATENT PENDING

The VERTI-Q integrates Quantum's exclusive EZ-Glide hand control, which is ergonomically designed to allow operator adjustment from a comfortable standing position with minimal effort. By actually pivoting on its axis during image receptor vertical movements, the EZ-Glide hand control minimizes the repetitive motion required for continuous receptor adjustment by the operator. The result is maximized operator efficiency and optimized posture during receptor positioning.

