



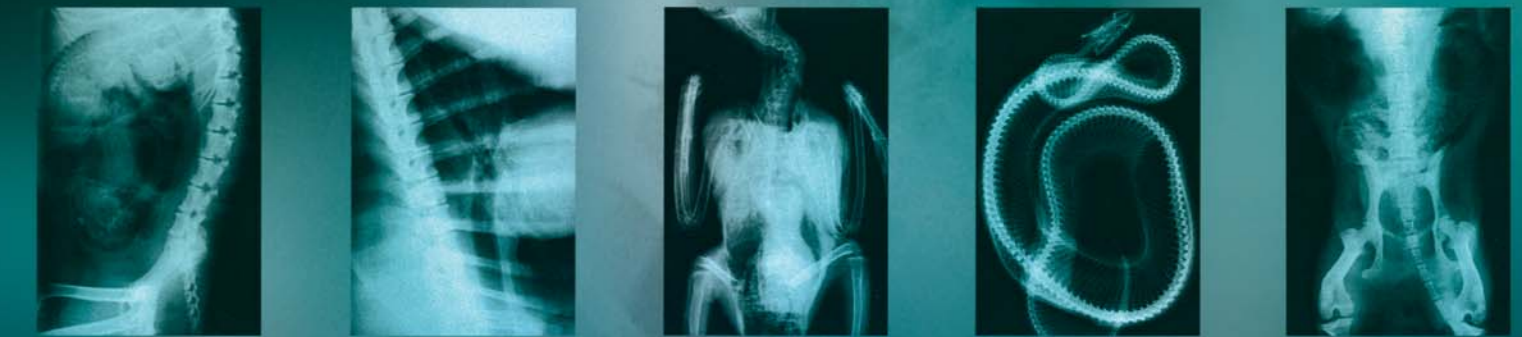
**Touch Screen Operator Console
(integrated in the X-ray unit):**
Color Monitor resolution: 800 x 600

X-ray Image ready in just 6 seconds after X-ray exposure!

No more repetitive exposures! The automatic exposure control combined with the Anatomical Animal Program, always obtaining the ideal image with an alone shot avoids underexposed and overexposed radiographs.



DIGITAL



Digital-Vet System Features



DAILY SCHEDULING
DICOM Work list query allows entry of scheduled patient information before the exam. DICOM Worklist query allows preloading of scheduled patient information. To select a patient name it is only a mouse click away. Patient information can also be entered directly from the workstation.



POSITION - EXPOSURE - X-ray IMAGE IS DISPLAYED
Just 6 Seconds after exposure, the image is ready for viewing on the System Control Station. Here the technologist receives the image and transmits it to designated locations. The available tools for image manipulation and labeling are user friendly.



The most remarkable software tools are:
-Smooth analog ZOOM
-WINDOWS LEVEL/WINDOW WIDTH
-Image CROP
-MAGNIFIER GLASS
-Image INVERTER (negative/positive)
-Image HISTOGRAM
-LINEAR and ANGULAR MEASUREMENT tools
-PATIENT DATA BASE management
-TEXT labeling function
-Rectangular and round SHAPE MARKER
-Image CONVERTER to a different formats (JPEG;

Digital Radiography Advantages



Eliminates the need for x-ray film.
No more repeat films eliminating unnecessary radiation to the patient and the operator.



No cassette handling.



No darkroom required.



No need for a film processor.



INSTANTANEOUS DIAGNOSIS
IMMEDIATE IMAGE on the Monitor- no time wasted in film processing (film developing, fixing, washing, drying, etc.)



Toxic waste is eliminated, developer, fastener, water with residues of silver salts, etc.

It does not require any consumption of water.

No recycling is necessary of residues.

It is fulfilled by the current ENVIRONMENT regulations

Standards Serie UNE-EN ISO 14000

Capable of sending images via electronic transfer.

DICOM compatible.

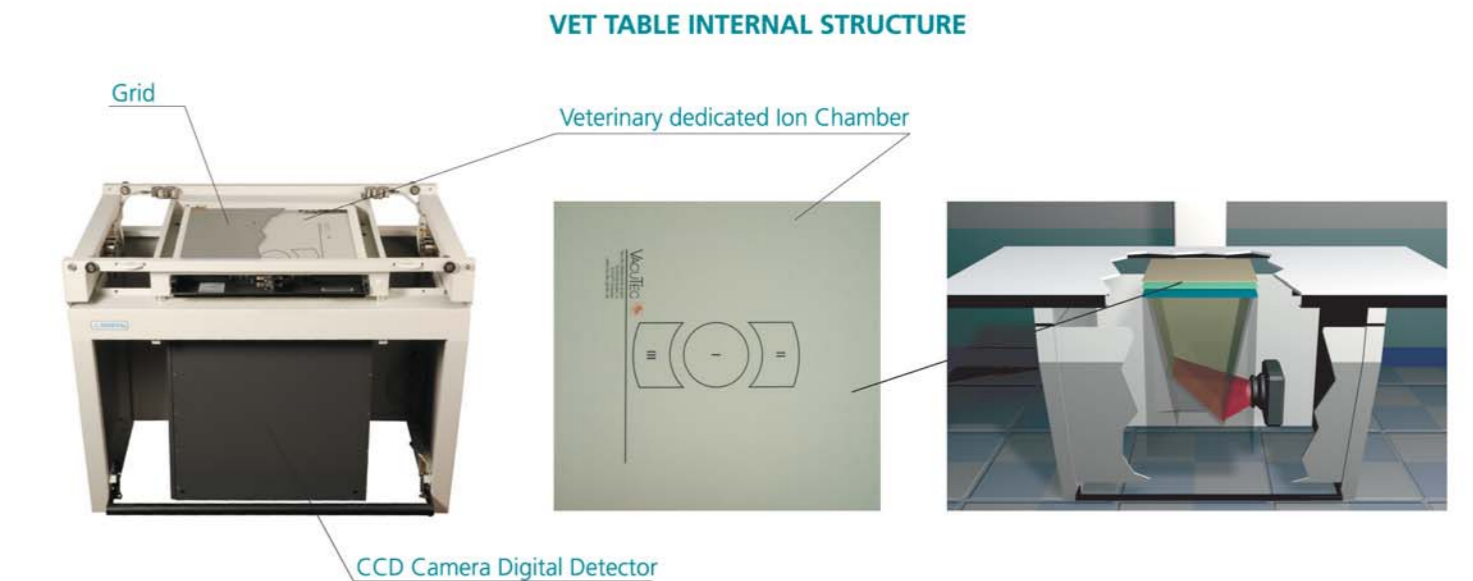
All mentioned advantages translate into enormous savings, both in time and money.



Digital imaging gives you a high quality image for diagnostic purposes with ONE EXPOSURE ONLY.

The wide dynamic range of the digital detector allows the user to modify the level and width of the gray scale window.

System Performance



examinations WITH GRID (for general purpose)

...and WITHOUT GRID, that improves the image quality for the examinations of the animal extremities.



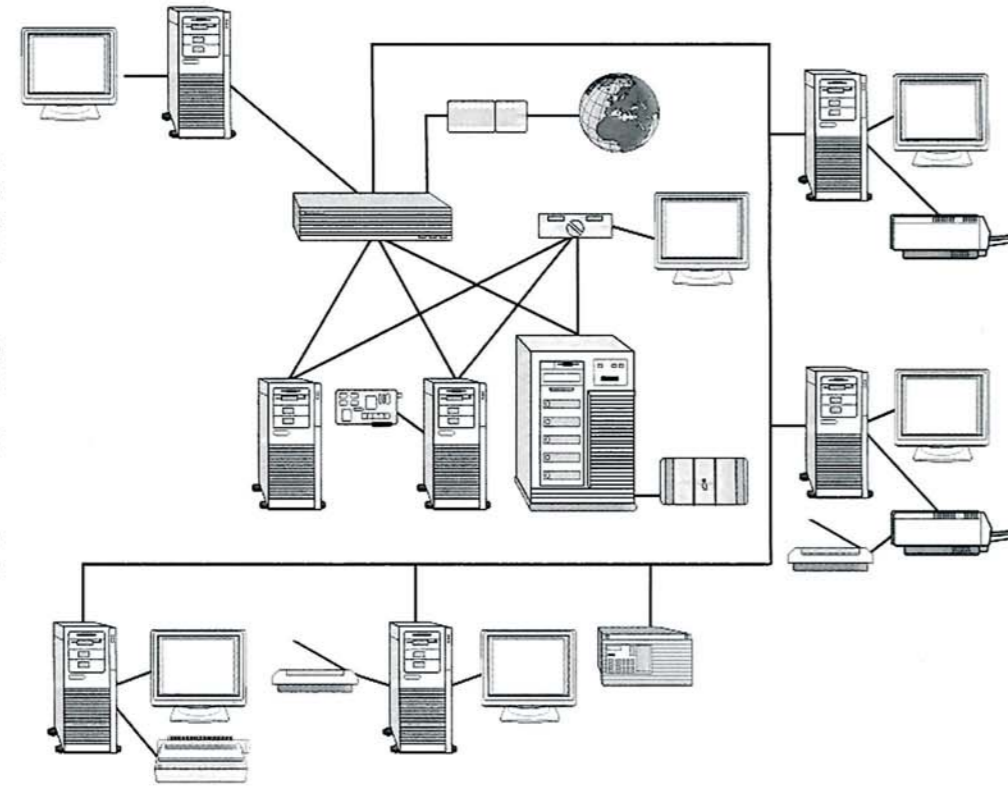
removable grid

The Electronics and Peripheral Components

The systems has been developed using leading edge technology in hardware and software components for connecting to the network peripherals.

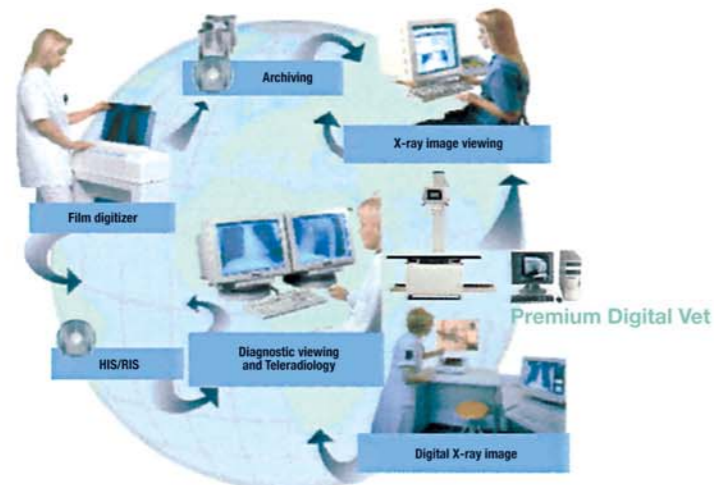
The operating system used is Windows 2000/Windows XP and runs on professional PC hardware. Networking is done by DICOM and Ethernet connections.

SEDECAL DIGITAL VET system can be connected to almost all modern existing peripheral equipment.



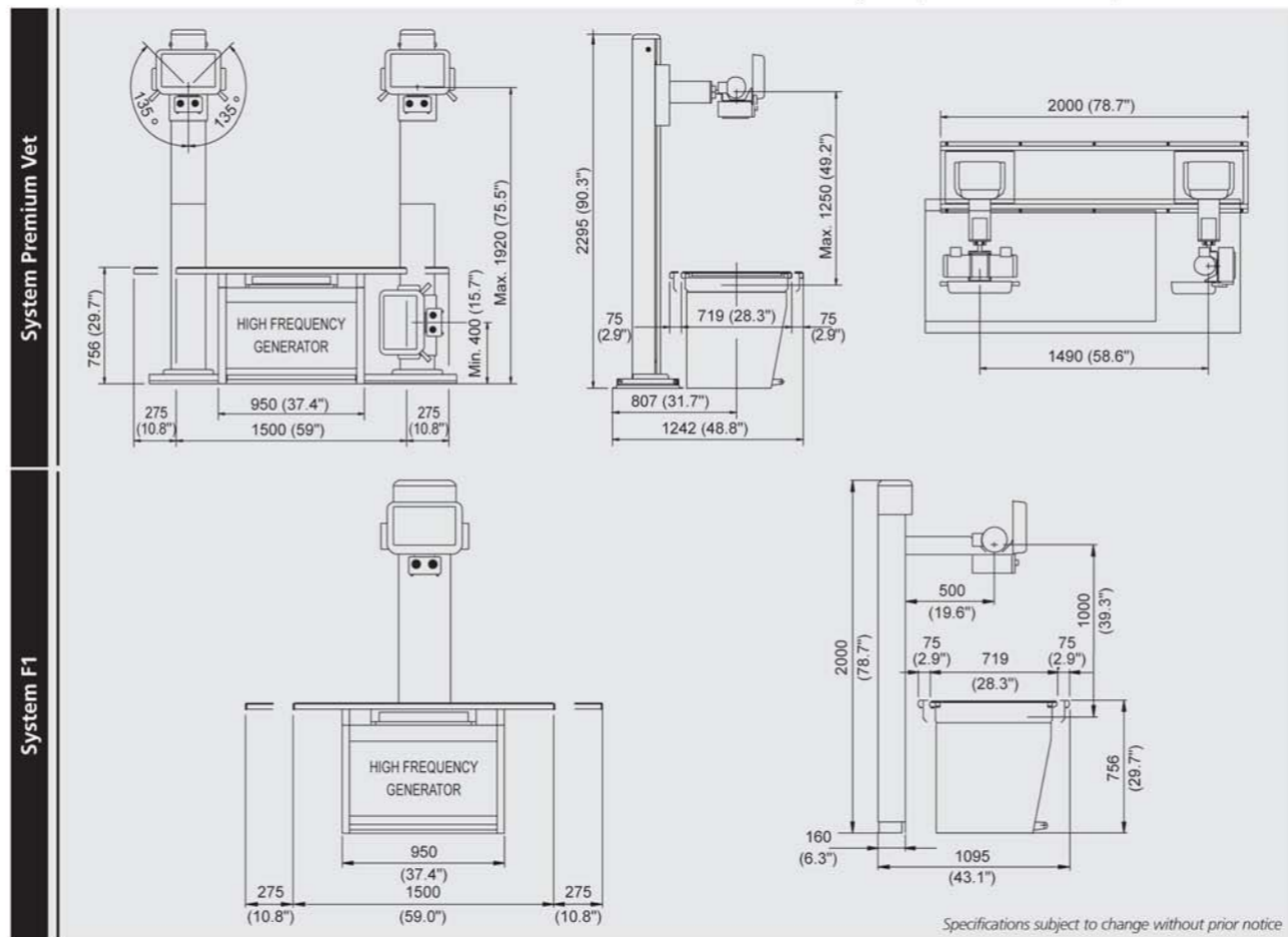
Network Compatibility

DICOM 3.0 compliance allows for integration of the Premium Digital-Vet system with other DICOM applications including PACS, RIS, reading stations and laser printers.



System Specifications	High Frequency X-ray Generator
CONSTANT POTENTIAL POWER RATINGS	32 kW
kVp range in 1 kV steps	40 to 125
mA STATIONS	10, 12.5, 16, 20, 25, 32, 40, 50, 64, 80, 100, 125, 160, 200, 250, 320, 400
EXPOSURE TIME range	0.001 - 10 seconds
mAs range	0.1 - 500 mAs
AUTOMATIC EXPOSURE CONTROL (A.E.C.)	3 fields ion chamber-veterinary special fields shape
DEDICATED ANATOMICAL PROGRAM (APR) FOR VETERINARIANS	STANDARD - (330 EDITABLE Anatomic views)
X-RAY TUBE - ROTATING ANODE: (2.850 r.p.m) (50 Hz) / (3.420 r.p.m) (60 Hz)	FOCAL SPOTS: 0.3 / 1.0 mm
LINE VOLTAGE and PHASES	208-240 VAC (single/three phase) 400-480 VAC (three phase) 50-60 Hz
FOCAL DISTANCE range	Source-Detector: 1000 mm (39.37")
System F1	Source-Detector: 100-1250 mm (3.94-49.21")
System V1	Source-Detector: 100-1250 mm (3.94-49.21")
PREMIUM VET System	Source-Floor: 400-1920 mm (15.75-75.59")
MECHANICAL MOVEMENT POSITIONING	MANUAL with ELECTROMAGNETIC BRAKES
TOTAL WEIGHT (X-ray Generator included)	Premium=458 kg (1,010 lb.) / System V1=360 Kg (794 lb.) / System F1=220 Kg (485 lb.)
2 m (6 FT) TABLE TOP / WALL MOUNTING PEDESTAL CONSOLE	OPTIONAL

Detector Specifications	
DETECTOR SIZE	35 x 43 cm (14" x 17") / 30 x 40 cm (12" x 16")
HIGH RESOLUTION SCINTILLATOR	6 Million Pixels - 173 microns Pixel Size
GRID	103 lines; 60 L/cm; R= 8:1; Focused to 1 meter
IMAGE MATRIX	2048 x 2478
DYNAMIC RANGE	65,563 Levels Grayscale (16 bit)
IMAGE RESOLUTION	2,8 LP/mm / 3,3 LP/mm
SENSITIVITY	Regular Speed: 200 ISO/ Fast Speed: 400 ISO



SEDECAL
 Pelaya, 13-Poligono Industrial "Rio de Janeiro"
 28110 - Algete (Madrid)
 Central Offices:
 Tel.: (34) 91-628 0544 / 91-628 1592
 Fax: (34) 91-628 0574
 Email: marketing@sedecal.com

Factory:
 Tel.: (34) 91-629 0721
 Fax: (34) 91-629 0783
 Email: manufacturing@sedecal.com

SEDECAL USA Inc
 2920 N Arlington Heights Rd.
 Arlington Heights, Illinois 60004
 USA
 Tel.: 1(847) 394-6960
 Fax: 1(847) 394-6966
 Email: sales@sedecalusa.com



Digital Vet



SYSTEM F1

SYSTEM V1

PREMIUM

www.sedecal.com

DigitalVetMax_V1.0_02_06_english